



2011 Western Nugget National

# HEREFORD

Horned and Polled

Show and Sale

December 1-3, 2011

Selling 21 Horned and Polled Hereford Lots

3 Flushes • 4 Picks

2 Embryo Packages

11 Show Heifer Prospects

Pregnant Recips

For information, contact: Mark Holt 208-369-7425



Sale Managed by:  
Matt Macfarlane  
Matt Macfarlane Marketing  
mmafarlane@cattlemen.net  
www.m3cattlemarketing.com  
916-803-3113 Cell



Reno's Year-Round Casino Resort  
1100 Nugget Ave., P.O. Box 797 • Sparks, NV 89432-0797  
For Nugget room reservations, call toll free at 800-648-1177.  
(Mention you are with the Hereford group to receive  
the Nugget Hereford Package.)

Cattle are consigned by the country's leading Hereford breeders — the same breeders that attend and participate in the Western Nugget National Hereford Shows. All first- and second-place winners in the Western Nugget National Shows will become eligible to sell!

LiveAuctions.TV

Buyers who would like to bid via internet must register with  
[www.liveauctions.tv](http://www.liveauctions.tv) two days prior to the sale.



## SALE INFORMATION

### Sale manager:



Matt Macfarlane  
Matt Macfarlane Marketing  
mmacfarlane@cattlemen.net  
www.m3cattlemarketing.com  
530-633-4184 • 916-803-3113 Cell  
530-633-4201 Fax

### Sale and Show Staff

Mark Holt, AHA/HW . . . . . 208-369-7425  
Joe Rickabaugh, AHA/HW . . . . . 816-842-3757  
Jerry York . . . . . *Western Livestock Journal*  
Matt Macfarlane . . . . . *California Cattleman*  
Scott Holt . . . . . *Special Representative*  
Kyle Colyer . . . . . *Special Representative*  
Butch Booker . . . . . Auctioneer  
Sue Hoffman, Show Secretary . . . . . 775-747-8917  
1405 Crown Dr. • Reno, NV 89503

### Special Guests

Craig Huffhines, Executive Vice President,  
American Hereford Association  
Loren Mrnak, Show Chairman  
Lawrence Goss, Junior Show Chairman

**Delivery costs will not exceed  
\$350 per lot on animals delivered  
to central locations within the  
continental United States.**



**Sale Day Phone 775-356-4182 or 916-803-3113  
Reno Livestock Events Center 775-688-5751  
Bob Macfarlane, Barn Superintendent 530-355-8340**

## Nugget Hereford Show & Sale Schedule

### Thursday, Dec. 1, 2011

**9 a.m. Junior Show**  
(Showmanship to start immediately following the show).

### Friday, Dec. 2, 2011

**9 a.m. Female Show** (Show Order: Polled Hereford Females Then Horned)  
**5 p.m. Social Hour** — Sale cattle on display. Sponsored by WSHA.  
**6:30 p.m. Social Hour, Silent Auction and Semen Auction** — Nugget Hotel

### Saturday, Dec. 3, 2011

**9 a.m. Bull Show** (Show Order: Horned Hereford Bulls Then Polled)  
**4 p.m. NUGGET HEREFORD SALE** —  
John Ascuaga's Nugget Celebrity Showroom

### TERMS AND CONDITIONS

**Bidding:** Each animal offered for sale will be sold to the highest bidder. Each bid shall constitute an offer to purchase, and the final bid shall constitute a binding contract between buyer and seller. The auctioneer will settle any disputes as to bids, and his decision on such matters shall be final.

**Terms:** Terms of the sale are cash or bankable check (U.S. funds), unless prior arrangements have been made. All settlements are to be made with the clerks of the sale immediately following the conclusion of the sale.

**Announcements:** Any changes from printed information of any kind will be announced from the auction block and such announcements shall take precedence.

**Registration Certificates:** A certificate of registration and transfer will be furnished for each animal at no cost to the buyer.

**Identification:** Seller offers each animal with a readable tattoo corresponding to registration. Buyer agrees to check tattoos for accuracy.

**Handling and Risks:** Each animal will be purchaser's risk as soon as sold.

**Rights and Obligations:** In the event of default in any part of the Terms and Conditions covering the sale by either the buyer or seller, it shall be the responsibility of the buyer or the seller to instigate any action necessary to bring about a fair settlement of any claims arising from this sale and to be responsible for any and all costs involved therein. The sale management assumes no responsibility, legal or otherwise, for the failure of either seller or buyer to fulfill their obligations. All persons who attend the sale do so at their own risk. Neither the sale manager nor any other person connected with the sale assumes any liability, legal or otherwise.

**Delivery:** Sale management will assist in making delivery arrangements of the sale animals to the new purchaser's destination at the least possible cost. Delivery will not exceed \$350 — per lot to a central location within the continental United States if arrangements are made by the sale manager. All such deliveries will be at the buyer's risk.

**Livestock Mortality Insurance:** Insurance will be available. Please notify the clerk if you wish to insure your purchase.

#### Health and Guarantees:

1. All bulls will be tested for Brucellosis, Trichomoniasis and appropriate health papers will be available for immediate shipment. All females are officially Brucellosis vaccinated. Cattle selling to any area that requires additional testing will have to complete tests prior to shipment.
2. All bulls born prior to Dec. 1, 2010 have passed a semen evaluation by an accredited veterinarian. These results will accompany the bull's health papers. Bulls born on or after Dec. 1, 2010 will be sold with a breeding guarantee.
3. All females selling safe in calf will have been tested within 30 days by an accredited veterinarian, and a statement of proof will accompany the health papers.
4. All cattle selling are guaranteed IE and PI/BVD free.

# FLUSH TO THE BULL OF BUYER'S CHOICE



*H Cattle Kate 8045 ET — A flush sells as Lot 1*

## Reno Lot 1 • Flush

### H CATTLE KATE 8045 ET

42910018 — Calved: May 3, 2008 — Tattoo: BE 8045  
 DD EXCEL DESIGN 40 (SOD) DUNROBIN EXCEL 32 ET  
 GO EXCEL L18 (SOD,CHB)(DLF,HYF,IEF) MISS LL BRIGADER 211  
 42159106 GO MS 124 ADVANCE 7005 GO 9012Y ADVANCE 124  
 GO MS 804 DOM 4005

C - S PURE GOLD 98170 (SOD,CHB)(DLF,IEF)  
 H LADY GOLD 323  
 42405914 RCR DOMINET 97032

C GOLD RUSH 1ET  
 C MS DOM 93218 1ET  
 RCR L1 DOMINO 1011  
 RCR DOMINET 4039

CE	BW	WW	YW	MM	M&G	MCE	SC	FAT	REA	MARB	BMI\$	CEZ\$	BIIS	CHBS
-1.3	4.0	53	86	32	59	-0.7	1.0	-0.046	0.51	-0.07	15	12	13	25
.14	.26	.23	.23	.21		.13	.15	.15	.17	.15				



*H Cattle Kate 8045 ET — 2010 Intermediate Champion at Ft. Worth and Denver and 2009 Denver Reserve Spring Heifer Calf Champion*

- Here is a great opportunity to get the most current genetics in the Hereford breed. H Cattle Kate 8045 ET is becoming the most sought after cow in the Hoffman program after producing the two top-selling heifer calves in the record-breaking 2011 Hoffman-Topp-W4 Sale in Nebraska. Her daughters, by Golden Oak Outcross 18U, brought \$79,000 and \$51,000 to Whispering Pine Farm, Kimball, Minn., and The Deppe Family of Maquokata, Iowa, respectively. Those two heifers will be tough to compete with and are as stout, sound, attractive, clean and deep as any you will find. The donor dam herself won her division many times and always was in the hunt. H Cattle Kate was the 2010 Intermediate Champion at Ft. Worth and Denver and 2009 Reserve Spring Heifer Calf Champion at Denver.
- The buyer of this flush will receive a minimum of six (6) embryos and minimum of three (3) pregnancies when done by an accredited technician. The cost of the flush and semen is the buyer's responsibility. If buyer chooses semen from a Hoffman owned sire, it will be provided by Hoffman Ranch. The flush will take place at the donor/flushing facility at the Hoffman/W4 Ranch in Thedford, Neb. If the buyer chooses, recipients are available by seller at cost. Implantation and calving of the progeny are also available at cost by the seller. Please contact Jason or Denny Hoffman about this option. This is all at cost to the buyer and is only an option. The buyer can take the embryos and use their own recipients and calve them out if they desire.



*H KH DD Dianna 1202 ET — The \$51,000 daughter of the Lot 1 donor*



*H KH DD Anabelle 1206 ET — The \$79,000 daughter of the Lot 1 donor*

**1/5** HOFFMAN  
 R.A.N.C.H.  
 modern, stout, functional

Denny and Jason Hoffman  
 P.O. Box 287, Thedford, NE 69166  
 530-604-5096  
 jason@hoffmanranch.com  
 www.hoffmanranch.com

# FLUSH TO THE BULL OF THE BUYER'S CHOICE



*BF Flirtatious 713T ET — A flush sells as Lot 2*



*BF Flirtatious 713T ET — Pictured as the 2009 National Western Stock Show Champion Polled Female*



*BF 743 Burlesque 092X ET — 2011 JNHE Division Champion Horned Female and daughter of the Lot 2 donor*



*BF 743 Its My Time 093X ET — 2011 JNHE Reserve Division Champion Polled Female and daughter of the Lot 2 donor*

## Reno Lot 2 • Flush

### BF FLIRTATIOUS 713T ET

P42835452 — Calved: Feb. 14, 2007 — Tattoo: RE 713T  
 REMITALL ONLINE 122L (SOD,CHB)(DLF,HYF,IEF) REMITALL EMBRACER 8E (SOD,CHB)(HYF)  
 BR MOLER ET (CHB)(DLF,IEF) REMITALL CATALINA 24H  
 P42516026 DM L1 DOMINETTE 820 REMITALL KEYNOTE 20X (SOD,CHB)  
 DM L1 DOMINETTE 518  
 REMITALL BOOMER 46B (SOD,CHB)(DLF,HYF,IEF) REMITALL KEYNOTE 20X (SOD,CHB)  
 ELM LODGE 24 KARAT 13K RMTLL SALLYS LASS 120X  
 P42110154 APPLEWOOD HONEY P183 102G JR NICK THE BUTLER P183 (SOD)(HYC)  
 APPLEWOOD HONEY 62B 405D

CE	BW	WW	YW	MM	M&G	MCE	SC	FAT	REA	MARB	BMIS	CEZS	BIIS	CHBS
1.1	4.9	58	90	27	56	4.5	0.6	-0.041	0.84	-0.04	17	15	12	30
.15	.28	.25	.24	.23		.14	.16	.17	.18	.16				

- One of the great cows of the breed, we are again selling a flush to the bull of the buyer's choice on BF Flirtatious 713T ET. She set the world on fire during her show career with wins at the 2008 JNHE, the 2009 National Western Stock Show and champion cow-calf at the 2010 JNHE. A flush sold as the high-selling lot at the 2008 Western Nugget National Sale to George Sprague at Bar 1 Ranch. He loved the cow so much he bought an interest in her. What a great decision it was as her first set of embryo calves by CRR About Time 743 were the talk of this year's JNHE. A daughter of this mating was a division champion in the horned show and a flush sister was reserve division champion in the polled show. This is truly a great opportunity and when you see these two heifer calves and how good they are, you will want to get a piece of this cow!
- The buyer is guaranteed six (6) embryos with a minimum of three (3) pregnancies when done by an accredited technician. Anything over six embryos will be split with Brumley Herefords. Semen and flush costs are the buyer's responsibility. Flushing of the cow to be done at Brumley Farms.

## Brumley Farms

Don, Skeeter, Karl, Brooke and Bryce  
 P.O. Box 239  
 Orovada, NV 89425  
 775-272-3152 • 775-272-3153 Fax  
 209-479-0287 Cell



## Bar One Ranch

George Jr. and Karen Sprague  
 85777 Vilhauer Rd.  
 Eugene, OR 97405  
 541-465-2188  
 541-228-5324 Cell

# FLUSH TO THE BULL OF THE BUYER'S CHOICE

## Reno Lot 3 • Flush

### C MISS NITRO 9152

P42991995 — Calved: Feb. 14, 2009 — Tattoo: BE 9152  
 GH NEON 17N (CHB)  
 UPS TCC NITRO 1ET (DLF,HYF,IEF)  
 P42827386 LCC TWO TIMIN 438 ET

C -S PURE GOLD 98170 (SOD,CHB)(DLF,IEF)  
 C PURE GOLD 5075 (DOD)  
 42575728 C 492D MISS ADV 9001

C GOLD RUSH 1ET  
 C MS DOM 93218 1ET  
 HH ADVANCE 492D (SOD)(DLF,IEF)  
 C MS MILE HIGH 97148



*C Miss Nitro 9152 — The donor dam of Lots 3 and 3A*

- A great opportunity to own some powerful genetics from one of the most eye-appealing, correct and stout made females to come out of Bruneau, Iaho. This female had a stellar show career for Allyson Spears and Schohr Herefords. She was named the 2011 Ft. Worth Stock Show Grand Champion Polled Heifer, the 2010 Western Nugget National Show Reserve Junior Champion Polled Heifer and now has become a picture perfect brood cow that is made like one should be with a great udder. Her mother is a tremendous producer as 9152 was her natural calf and gave her

a WR of 119. All together, her mother has progeny ratios of three at 107 for weaning and two at 105 for yearling.

- The buyer is guaranteed eight (8) embryos with a minimum of four (4) 60-day pregnancies when done by an accredited technician. Anything over eight embryos will be split with Schohr Herefords and Allyson Spears. Semen and flush costs are the buyer's responsibility. Flushing of the cow to be done at Schohr Herefords.

## Reno Lot 3A • Embryos

### SIX EMBRYOS

CRR ABOUT TIME 743 (CHB)(DLF,HYF,IEF)  
 TH 89T 743 UNTAPPED 425X ET (DLF,HYF,IEF)  
 P43117135 TH 16G 20N GEMINI 89T (DLF,HYF,IEF)

THM DURANGO 4037 (CHB)(DLF,HYF,IEF)  
 CRR D03 CASSIE 206  
 NPH 20X SPARTAN 20N (CHB)(DLF,HYF,IEF)  
 TEE-JAY 707B GEMINI 16G ET

UPS TCC NITRO 1ET (DLF,HYF,IEF)  
 C MISS NITRO 9152  
 P42991995 C PURE GOLD 5075 (DOD)

GH NEON 17N (CHB)  
 LCC TWO TIMIN 438 ET  
 C -S PURE GOLD 98170 (SOD,CHB)(DLF,IEF)  
 C 492D MISS ADV 9001

Sires EPDs	CE	BW	WW	YW	MM	M&G	MCE	SC	FAT	REA	MARB	BMS	CEZS	BIIS	CHBS
	-0.4	3.6	50	75	15	40	1.0	0.5	-0.046	0.62	0.17	19	14	17	29
	P	.23	.21	.21	.09		P	.14	.16	.16	.15				

Dams EPDs	CE	BW	WW	YW	MM	M&G	MCE	SC	FAT	REA	MARB	BMS	CEZS	BIIS	CHBS
	-2.2	5.0	61	99	18	49	2.6	0.9	-0.002	0.62	-0.03	18	12	14	28
	.09	.37	.30	.28	.11		.08	.12	.14	.15	.13				

- This mating is sure to find success with whoever has the insight to purchase it on sale day. Enough has been said about the donor dam, she is a great one. The sire of these embryos was the 2011 second high-seller for Topp Herefords to a group of insightful Canadian breeders. He is very correct in his phenotype and has a tremendous maternal pedigree. Take a look at his mother! These cattle should work in any facet of the industry!
- The buyer will get six (6) embryos with a minimum of three (3) 60-day pregnancies when done by an accredited technician. Embryos will be replaced if three pregnancies are not obtained.



*TH 89T 743 Untapped 425X ET — Sire of Lot 3A*



*TH 16G 20N Gemini 89T — Paternal grandam of Lot 3A*



Steven and Carl Schohr  
 P.O. Box 391, Gridley, CA 95948  
 530-846-4354 • 530-864-2855 Carl, Cell  
 smschohr@sbcglobal.net • ricencows@schohr.com

Allyson Spears  
 6741 Balford Rd., Brentwood, CA 94513  
 209-988-7722



# THREE (3) GRADE ONE EMBRYOS

## Reno Lot 5 • EMBRYOS

### Three (3) Grade One Embryos

GOLDEN-OAK FUSION 3S  
GOLDEN OAK OUTCROSS 18U (DLF,HYF,IEF)  
P42963135 GOLDEN-OAK 60D MALLORY 15M

GOLDEN-OAK 4J MAXIUM 28M (CHB)(DLF,HYF,IEF)  
NCX MISS JR NELLIE 528N  
RU DUSTER 60D (CHB)  
GOLDEN-OAK P183 GLORIA 25G

HARVIE RAFTSMAN 16R (CHB)  
C RAFTER SUE 6V  
P43002408 C MS SPIDEL EAGLE 04R

HARVIE LADIES MAN 4L (CHB)  
HARVIE MISS FIREFLY 51F  
CHURCHILL EAGLE 504 (SOD,CHB)(DLF,HYF,IEF)  
MSR 21E CURLY SUE 826



Golden Oak Outcross 18U —  
Sire of Lot 5



C Rafter Sue 6V — Dam of Lot 5

- A golden opportunity for an "Outcross" pedigree presents itself in this mating. The sire was champion bull at the 2009 American Royal and Western Nugget National and the 2010 Ft. Worth Stock Show Reserve Champion. He recently sired the champion polled Hereford heifer at the JNHE as well as a \$79,000, a \$51,000 and a \$30,000 heifer calf at the record-breaking Hoffman/W4/Top sale, as well as many others that commanded top dollar. He also sired the 2011 National Western Stock Show Champion Female! The donor dam of these embryos is no slouch herself being balanced with a perfect udder. With Churchill Eagle 504 and Harvie Raftsman 16R on her pedigree, she can't miss. Whether you are looking for highly competitive show cattle, brood cow or herd sire prospects, this mating is for you.
- Buyer receives three (3) Grade One embryos from the above mating. Shipping is the buyer's responsibility.

Sires EPDs

CE	BW	WW	YW	MM	M&G	MCE	SC	FAT	REA	MARB	BMIS	CEZS	BIIS	CHBS
-3.9	6.0	78	126	15	54	1.4	1.3	0.036	0.85	0.15	23	11	18	37
.15	.74	.55	.52	.08		.10	.18	.27	.28	.24				

Dams EPDs

CE	BW	WW	YW	MM	M&G	MCE	SC	FAT	REA	MARB	BMIS	CEZS	BIIS	CHBS
-0.7	4.0	49	77	21	46	-0.7	0.5	-0.027	0.43	-0.04	13	12	11	22
.11	.34	.28	.26	.14		.09	.11	.12	.14	.12				

## POTTER RANCH HEREFORDS

Bob and Peggy Potter • 4840 Fisher Rd. • Winton, CA 95388  
209-358-7123 • 209-617-2857

# FOUR (4) GRADE ONE EMBRYOS



NJW 98S R117 Ribeye 88X ET —  
Sire of Lot 6A



GKB EJE B627 Breeze B930 ET —  
Full sister to Lot 6A



PRCC GKB 6170 Miss Excell 150W —  
Dam of Lot 6B



GKB EJE B627 Full Tank B927 ET —  
Sire of Lot 6B

## Reno Lot 6A • EMBRYOS

### Four Grade 1 Embryos

SHF RIB EYE M326 R117 (CHB)(DLF,HYF,IEF)  
NJW 98S R117 RIBEYE 88X ET (DLF,HYF,IEF)  
43094146 NJW 9126J DEW DOMINO 98S (DLF,IEF)

KCF BENNETT 3008 M326 (CHB)(DLF,HYF,IEF)  
HVH MISS HUDSON 83K 8M  
CL 1 DOMINO 9126J 1ET (SOD,CHB)(DLF,IEF)  
NJW 57G 74G DEW 5M

GKB DOWNTOWN B627 ET (DLF,IEF)  
GKB EJE B627 BREEZE B929 ET (DLF,HYF,IEF)  
43012984 GKB 146 BREEZE B533

BR MOLER ET (CHB)(DLF,IEF)  
GKB MISS PURE GOLD B239 ET  
DM BR L1 DOMINO 146 (CHB)(DLF,IEF)  
RAW MS BREEZE 14M

Sires EPDs

CE	BW	WW	YW	MM	M&G	MCE	SC	FAT	REA	MARB	BMIS	CEZS	BIIS	CHBS
2.9	1.9	52	82	27	53	3.5	1.4	-0.010	0.32	0.15	24	19	21	27
P	.22	.21	.21	.17		P	.17	.17	.18	.17				

Dams EPDs

CE	BW	WW	YW	MM	M&G	MCE	SC	FAT	REA	MARB	BMIS	CEZS	BIIS	CHBS
0.3	4.2	48	82	19	43	2.5	0.7	-0.019	0.58	-0.06	16	15	14	23
.07	.23	.17	.16	.08		.06	.06	.08	.08	.07				

- Offering four Grade 1 embryos from the established "Breeze" cow family at GKB Cattle. B929 is a deep ribbed, wide based individual that is sound and functional. The dam of B929 was the first ever supreme champion female at the 2007 Houston junior show in addition to winning her division at the 2006 Western Nugget National, JNHE and Ft. Worth. With the mating of our new partnership herd sire 88X out of Rib Eye and the feminine and gorgeous 98S NJW donor, these embryos could produce the next level of potent genetics. The sire of B929, GKB Downtown B627 ET, has his first daughters in production and their udders are beautiful and functional. Downtown was calf champion at the Ft. Worth national show and reserve division champion there as a 2-year-old.

## GKB CATTLE

Gary and Kathy Buchholz  
P.O. Box 2807,  
Waxahachie, TX 75168  
214-537-1285 Gary, Cell  
gary@gkbcattle.com  
www.gkbcattle.com

## PRAIRIE ROSE CATTLE CO.

Sherman, Ill.

## ROSSON FAMILY

177 PR 423  
Milford, TX 76670

## Reno Lot 6B • EMBRYOS

### Four Grade 1 Embryos

GKB DOWNTOWN B627 ET (DLF,IEF)  
GKB EJE B627 FULL TANK B927 ET  
43012983 GKB 146 BREEZE B533

BR MOLER ET (CHB)(DLF,IEF)  
GKB MISS PURE GOLD B239 ET  
DM BR L1 DOMINO 146 (CHB)(DLF,IEF)  
RAW MS BREEZE 14M

C MOLER 6170 ET  
PRCC GKB 6170 MISS EXCEL 150W (DLF,HYF,IEF)  
43088113 GO MS M33 EXCEL P150

BR MOLER ET (CHB)(DLF,IEF)  
C NOTICE ME ET  
GO EXCEL M33  
GO MS 205 EXCEL L89

Sires EPDs

CE	BW	WW	YW	MM	M&G	MCE	SC	FAT	REA	MARB	BMIS	CEZS	BIIS	CHBS
0.8	3.6	46	79	19	42	2.7	0.7	-0.018	0.57	-0.06	16	15	14	22
.07	.28	.18	.18	.08		.06	.06	.08	.09	.07				

Dams EPDs

CE	BW	WW	YW	MM	M&G	MCE	SC	FAT	REA	MARB	BMIS	CEZS	BIIS	CHBS
-1.0	5.0	53	91	27	54	0.9	0.9	-0.027	0.51	0.04	16	13	14	27
.05	.28	.17	.17	.08		.04	.05	.06	.08	.08				

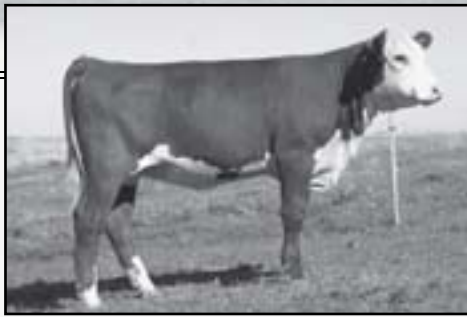
- Both sire and dam are national division winners at Reno, Denver or Ft. Worth. The dam, 150W, was a division winner at both Denver and Ft. Worth in 2011. She is very broody, deep made, soft and easy doing in addition to being sound structured and having a beautiful udder with balance and small teats. The sire, Full Tank, was the 2010 Western Nugget National Reserve Grand Champion Hereford Bull and, in addition, won his division at the 2011 national Ft. Worth show. He is a son of GKB Downtown B627 ET and out of the Breeze B533 donor that was a division champion at Reno in 2006 as well as winning other national divisions and supreme at Houston. Full Tank's first calves are on the ground and they are exciting with that extra dimension of muscle and eye appeal. When you look at the pedigree of these embryos, this mating is combining winning genetics that are also proven genetics! Lots of show potential here and then you will have superior genetics to add to your herd.

## GKB CATTLE

Gary and Kathy Buchholz  
P.O. Box 2807, Waxahachie, TX 75168  
214-537-1285 Gary, Cell  
gary@gkbcattle.com • www.gkbcattle.com

## PRAIRIE ROSE CATTLE CO.

Sherman, Ill.



Lot 7 — SB 75R Erin 27Y ET

# Reno Lot 7

## SB 75R ERIN 27Y ET

P43220102 — Calved: Feb. 19, 2011 — Tattoo: BE 27Y  
 C LR DIESEL 2030 ET (DLF,HYF,IEF) C-S PURE GOLD 98170 (SOD,CHB)(DLF,IEF)  
 LAMBERT REMEDY 2030 75R (DLF,HYF,IEF) HH MISS ADVANCE 104A (DOD)  
 P42682459 CS VICKI 637B 34K CS FRAZER 517 637B  
 CS VICKI 443E 60H

SB 122L PRIDE LINE 32N ET REMITALL ONLINE 122L (SOD,CHB)(DLF,HYF,IEF)  
 SB 32N ERIN 144T ET (DLF,HYF,IEF) FV DOTS PRIDE 3E 0002  
 P42823083 RU 20X ERIN 54E REMITALL KEYNOTE 20X (SOD,CHB)  
 RU 15W SUSAN 54Z

CE	BW	WW	YW	MM	M&G	MCE	SC	FAT	REA	MARB	BMS	CEZS	BIIS	CHBS
1.5	3.5	52	79	21	47	2.3	0.4	0.010	0.39	-0.07	12	14	9	21
P	P	P	P	P		P	P	P	P	P				

• A fancy daughter of Remedy here in Erin 27Y. 27Y's dam, Erin 144T, was the high selling bred heifer in our 2008 sale, to Circle S West Ranch for \$20,000, half interest and is an own daughter of Erin 54E, super donor, mother of Git-R-Done 19R, Ariat 61N and Fusion 138X. 27Y is super sound, smooth made, while at the same time showing tremendous rib shape. 27Y is a full sister in blood to Bennett Holt's heifer who has been very successful this summer, being named show heifer of the year by the Idaho Junior Hereford Association. Erin 27Y appears to have all the physical features, as well as documentation she needs to follow in her dam's lead to the front pasture.



## Split Butte Livestock

Wynn Dewsnap • P.O. Box 25, Minidoka, ID 83343  
 208-431-3311 • splitbutte@pmt.org



Lot 9 and her dam were the 2011 Western Washington Fair Reserve Champion Cow-Calf Pair in Puyallup.

# Reno Lot 9

## GF 41W MARLO 104

P43212546 — Calved: Jan. 27, 2011 — Tattoo: LE 104/RE GF  
 SHF RIB EYE M326 R117 (CHB)(DLF,HYF,IEF) KCF BENNETT 3008 M326 (CHB)(DLF,HYF,IEF)  
 NJW 54N R117 RIBEYE 41W HVH MISS HUDSON 83K 8M  
 P43006705 NJW 57G LADYSPORT 54N ET (DOD) RU 20X BOULDER 57G (CHB)  
 GK LADYSPORT 131A

BR MOLER ET (CHB)(DLF,IEF) REMITALL ONLINE 122L (SOD,CHB)(DLF,HYF,IEF)  
 GF CASSIE MARIE 910 ET DM L1 DOMINETTE 820  
 P43018389 SB 2013 CASSANDRA 214R ET (DLF,IEF) HB STAR BATTLE GROUND 2013 (DLF,HYF,IEF)  
 VF TCR 23C CASSANDRA 115 ET

CE	BW	WW	YW	MM	M&G	MCE	SC	FAT	REA	MARB	BMS	CEZS	BIIS	CHBS
2.1	4.0	49	81	19	43	4.7	1.1	-0.040	0.45	-0.03	22	18	19	25
P	P+	P+	P+	P+		P	P+	P	P	P				

• Here is an outstanding January heifer calf that has already been named reserve heifer calf champion at the 2011 Puyallup show and with her dam were named reserve champion cow-calf pair at the same show. She is stout, big-bodied, heavy-structured and will make a tremendous show heifer and then mama cow. Her sire is from the great Ned and Jan Ward program in Wyoming and her dam has a powerful pedigree for quality cattle with style, muscle and marketability.

# Gallagher Farms

Brian and Shawna Gallagher • P.O. Box 672, Enumclaw, WA 98022  
 253-261-9968 • bwgallagher@clearwire.net



Lot 8 — KPT 75R Hope 12Y ET

# Reno Lot 8

## KPT 75R HOPE 12Y ET

P43218127 — Calved: Feb. 12, 2011 — Tattoo: BE 12Y  
 C LR DIESEL 2030 ET (DLF,IEF) C-S PURE GOLD 98170 (SOD,CHB)(DLF,IEF)  
 LAMBERT REMEDY 2030 75R (DLF,HYF,IEF) HH MISS ADVANCE 104A (DOD)  
 P42682459 CS VICKI 637B 34K CS FRAZER 517 637B  
 CS VICKI 443E 60H

STAR SPIRIDGE BOOMER 63L (DLF,HYF,IEF) CS BOOMER 29F (SOD,CHB)(DLF,HYF,IEF)  
 DR JM 63L JOSI 305N (DLF,HYF,IEF) RWS SARA 266Z S78F  
 P42357895 DR JM 7H JOSI 063K MSU STAR DR HEADMASTER  
 DR MM 651 JOSI 891H

CE	BW	WW	YW	MM	M&G	MCE	SC	FAT	REA	MARB	BMS	CEZS	BIIS	CHBS
2.2	3.7	55	90	23	50	0.6	0.6	0.010	0.53	-0.01	15	15	11	25
P	P	P	P	P		P	P	P	P	P				

• As a family, after the untimely death of Kenny this summer, decided that it would be fitting to consign for our Hereford families' appraisal and benefit, a couple of his very best ET females to national sales. Kenny dedicated his life and was determined to "Building a better Hereford!" We believe, Hope 12Y, combines all the things Kenny strived daily to breed into his and Paula's, as well as Split Butte's program. Hope 12Y is a super long fronted, big hipped, powerful daughter of Remedy and Josi 305N (more commonly known as "Josi Junior" around the ranch). Hope 12Y has a tremendous amount of bred in performance, balance and future to improve any progressive program.

## Ken and Paula Tracy

319 E. 300 N. • Rupert, ID 83350 • 208-431-6301



Lot 10 — ER Dominette 153

# Reno Lot 10

## ER DOMINETTE 153

43215728 — Calved: March 2, 2011 — Tattoo: BE E153  
 GH NEON 17N (CHB) GH DIFFERENCE BRITISHER 45L (CHB)  
 CHURCHILL YANKEE ET (CHB)(DLF,HYF,IEF) GH SIR SIMBA LASS 107K  
 42731411 CHURCHILL LADY 202 HH ADVANCE 767G 1ET (SOD,CHB)(DLF,IEF)  
 CHURCHILL LADY 0113

H5 5131 DOMINO 1109 (DLF,HYF,IEF) CL 1 DOMINO 5131E (SOD)(DLF,IEF)  
 ER DOMINETTE 765 H5 9012 DOMET 571 (DOD)  
 42830705 ER MS PATRIOT 961 RBR PATRIOT 5304  
 ER GOLDEN LADY 457

CE	BW	WW	YW	MM	M&G	MCE	SC	FAT	REA	MARB	BMS	CEZS	BIIS	CHBS
1.3	2.9	48	82	19	43	2.1	0.3	0.007	0.26	0.22	14	15	11	26
P	P	P	P	P		P	P	P	P	P				

• The heifers from England Ranch are crowd favorites every year for one reason. They all make great cows! This one is by the great Yankee who puts dimension and performance into everything and out of a good cow with a BR of two at 97.5 and WR of two at 100. Remember, the England family knows how to make cows!

# England Ranch

Jim England • P.O. Box 38, Prineville, OR 97754 • 541-447-6972



Lot 11 —  
CC Ms Current Answer 13Y

# Reno Lot 11

## CC MS CURRENT ANSWER 13Y

P43220616 — Calved: April 3, 2011 — Tattoo: LE 13Y  
 CC CX UNITED 52S ET REMITALL LAGRD POUNDER ET 204P  
 CC CX 52S 28R CACHE CURRENCY 16V SB 122L DOTTIE 109N ET  
 P43024516 CC CX FORTRESS THUNDER 28R (DLF,HYF,IEF) MH FORT KNOX 217  
 SB 62J FERGIE 88N ET

WSF CC LEADING ANSWER 396 ET REMITALL ONLINE 122L (SOD,CHB)(DLF,HYF,IEF)  
 CC LEADING LADY 31T WSF VICTOR LADY 869  
 P42842223 CC MISS L1 ANVIL 2141 TLH L1 DOMINO 129  
 CC RARE LADY 912

CE	BW	WW	YW	MM	M&G	MCE	SC	FAT	REA	MARB	BMS	CEZS	BIIS	CHBS
-1.5	4.5	54	88	19	46	1.8	0.6	0.000	0.31	-0.01	14	12	11	23
P	P+	P+	P+	P+		P	P+	P	P	P				

• 13Y has all the tools and documentation to be a future cornerstone for any herd. She is sired by our resident her sire, Currency 16V, who was a Reno and Denver class winner and is a maternal sibling to the 2010 NWSS Reserve Yearling Champion Heifer and the 2010 Western Nugget Spring Bull Calf Champion as well as being a paternal sibling to the 2010 Canadian Junior National Champion Female. 16V is a son of Semex International and Elm Lodge herd sire, United, who's daughters in production are grabbing international attention. 13Y's dam is by a maternal sibling to the two-time national cow-calf champion, WSF Victoria Lady 165, for Wooden Shoe in Idaho, and is a daughter of a great performance records the great, 2141, who boasts a WWR of 102 on 6 head. 13Y has a very balanced set of numbers to go along with her sharp front, big hip, and smooth stride. She carries herself extremely well and has a solid profile. With her pedigree, numbers, and phenotype, 13Y is sure to have friends come sale day.



Rod Curtis • 2617 S. 2000 W., Wellsville, UT 84339  
 435-753-5628 • 435-770-0509 Cell • rod@relia.net



C New Era ET —  
Sire of Lot 13

# Reno Lot 13

## MH NEW ERA 104

P43181943 — Calved: Feb. 4, 2011 — Tattoo: LE 104  
 UPS TCC NITRO 1ET (DLF,HYF,IEF) GH NEON 17N (CHB)  
 C NEW ERA ET (DLF,HYF,IEF) LCC TWO TIMIN 438 ET  
 P42992025 C NOTICE ME ET C-S PURE GOLD 98170 (SOD,CHB)(DLF,IEF)  
 HH MISS ADVANCE 104A (DOD)

CC CX UNITED 52S ET REMITALL LAGRD POUNDER ET 204P  
 MH LADY UNITED 803 SB 122L DOTTIE 109N ET  
 P42900148 MH DA LADY 207 (DOD) AS YOU DA MAN 908  
 MH LADY PAT 930

CE	BW	WW	YW	MM	M&G	MCE	SC	FAT	REA	MARB	BMS	CEZS	BIIS	CHBS
-1.8	3.9	53	89	23	49	1.9	0.7	-0.005	0.44	0.02	15	12	12	24
.05	.34	.18	.18	.06		.04	.05	.06	.07	.06				

• This female is extra stout with tremendous growth numbers. Her sire is a past multiple national champion sire, New Era, out of a tremendously good young cow that is paternal sister to the 2010 Canadian Junior National Champion Female.

## MICHELI HEREFORDS

P.O. Box 15, Ft. Bridger, WY 82933  
 Dale 307-782-3469 • Ron 307-782-3897  
 dmicheli@bvea.net



This 2011 JNHE class winner  
and Southwest Regional  
Preview Show Champion  
comes from the same program  
as Lot 12.

# Reno Lot 12

## WH MISS KNIGHT 112Y

43192361 — Calved: May 3, 2011 — Tattoo: BE 112Y  
 UPS KNIGHT 4197 (DLF,IEF) BCD 721G KNIGHT 4K (SOD,CHB)  
 WCC KNIGHT 805 UPS MISS MARK DOMINO 1492  
 42907421 WCC PERFECT LADY 508 WH MR CHIVAS 442 1ET  
 WH MS REPUBLICAN 833 (DOD)

WCC RED HAWK 504 WH AVALANCHE 028  
 WH MS RED HAWK 806 WCC CLASSY LADY REP 157 (DOD)  
 42907420 WH MS TRAILBLAZR 405 WH TRAILBLAZER 966 (SOD)  
 WH MS AVALANCHE 232

CE	BW	WW	YW	MM	M&G	MCE	SC	FAT	REA	MARB	BMS	CEZS	BIIS	CHBS
0.4	3.0	45	74	17	40	0.6	0.8	0.024	0.27	0.05	17	15	16	19
P	P	P	P	P		P	P	P	P	P				

• Marylee White always puts her best in the sale. This sweet little May heifer calf will surely tear up the intermediate division. Remember last year we sold two of her best and averaged over \$7,000 per head. That is because her cattle are good and work in from the showing to the pasture. If you have ever seen where she runs them in Burns, Ore., you will know they have to earn their keep!

## White Hereford Ranch

Marylee and Doris White • 71438 Turnout Rd., Burns, OR 97720  
 541-573-6566 • maryleewhite@centurytel.net



Lot 14 — TS Wendy 107

# Reno Lot 14

## TS WENDY 107

43204004 — Calved: April 1, 2011 — Tattoo: BE 107  
 WHR PROMISE KEPT 775 CRS PROMISE KEEPER 306  
 ARS SWAGGER 905 WHR 3159 MS DOM 926  
 43044912 ARS MISS KEY NOTE 710 DM BR KEYNOTE 4108 ET  
 ARS BRITTNEY 317

ARS MO BETTA (DLF,HYF,IEF) CRS PROMISE KEEPER 306  
 TJS MONIC 911 ARS DREAM GIRL 303  
 43044918 CRS RUBY TUESDAY 508 GO EXCEL L18 (SOD,CHB)(DLF,HYF,IEF)  
 CRS MARTINA 318

CE	BW	WW	YW	MM	M&G	MCE	SC	FAT	REA	MARB	BMS	CEZS	BIIS	CHBS
-2.7	5.9	52	89	24	50	-0.1	0.9	-0.032	0.33	-0.07	14	11	13	23
P	P+	P	P	P		P	P	P	P	P				

• This is one of the sweetest profiling heifers we have offered for sale. She's wide-topped, broad-based, super correct, choke-fronted and has great hair. She has GO Excel L18 within her 4-generation pedigree four times. There is no doubt she will make a great cow and will be a showing favorite. This sweetheart heifer in one of our best and we like to bring our best to Reno. This female has the genetics that don't come around that often and L18 has made a huge impact on the breed. Just take a look at Lots 1 and 4 in this sale.

## Sticks and Stones Ranch

Gene and Cindy Stillahn • 3902 Co. Rd. 203, Cheyenne, WY 82007  
 307-635-6716 • 307-421-1592 Cell • gcstick@millec.com



## PICK OF THE HEIFERS

**CJH Harland 408** —  
Sire of Lot 15A

**K 64H Ribstone Lad 157K** —  
Sire of Lot 15B



## Reno Lot 15A

**GENOA MISS HARLAND 408 11032**

43174354 — Calved: Feb. 11, 2011 — Tattoo: BE 11032  
 HH ADVANCE 9005J (CHB)(DLF,HYF,IEF) KB L1 DOMINO 519  
 CJH HARLAND 408 (CHB)(DLF,HYF,IEF) HH MS ADVANCE 4054D (DOD)  
 42536808 CJH L1 DOMINETTE 0064 (DLF,HYF,IEF) L1 DOMINO 920501 (SOD)  
 CJH L1 DOMINETTE 759  
 GH NEON 17N (CHB) GH DIFFERENCE BRITISHER 45L (CHB)  
 H LADY NEON 840 GH SIR SIMBA LASS 107K  
 42915852 GO MS L18 EXCEL R55 GO EXCEL L18 (SOD,CHB)(DLF,HYF,IEF)  
 GO MS 205 EXCEL M72

CE	BW	WW	YW	MM	M&G	MCE	SC	FAT	REA	MARB	BMS	CEZS	BIIS	CHBS
2.3	1.5	52	89	26	52	2.9	1.2	0.050	0.38	0.35	23	17	19	29
.15	.37	.24	.24	.17		.13	.17	.17	.17	.16				

• This female had a birth wt. of 74 lb. Her sire, Harland, is one of the great maternal and calving ease bulls in the breed. This heifer calf is red to the ground and very correct in her make up. She has seven traits that are in the top 10% of the breed or better. Her pedigree is flawless on the bottom side with GH Neon 17N and GO Excel L18 in her pedigree. This female is moderate framed, stylish and is gentle as a kitten. With her kind and pedigree, she should make a donor some day.

## Reno Lot 15B

**GENOA MISS RIBSTONE 11035 ET**

43174239 — Calved: Feb. 13, 2011 — Tattoo: BE 11035  
 STANDARD 16E RIBSTONE 64H STANDARD RIBSTONE 16E  
 K 64H RIBSTONE LAD 157K (CHB)(DLF,HYF,IEF) STANDARD LASS 23E  
 42267708 K 61Z SUPER LADY 41G SNS SUPER PACE ET 61Z (CHB)  
 K 58X MASTER LADY 88Z  
 HH ADVANCE 145L (SOD,CHB)(DLF,IEF) HH ADVANCE 6052F (SOD)(DLF,IEC)  
 HH MISS ADVANCE 4178P HH MISS ADVANCE 766G  
 42475874 HH MS ADVANCE 8037H CL 1 DOMINO 500E (SOD)(DLF,IEF)  
 HH MISS ADVANCE 687F

CE	BW	WW	YW	MM	M&G	MCE	SC	FAT	REA	MARB	BMS	CEZS	BIIS	CHBS
3.2	3.4	50	82	33	57	3.1	1.4	0.000	0.34	0.24	23	19	20	28
P	P	P	P	P		P	P	P	P	P				

• This female is out of our donor cow that comes from the famed Holden program. She has 10 traits that rank her in the top 10% or better. Visually, she is gorgeous fronted, dark red, stylish and quiet. Her sire has a tremendous EPD profile and is doing a tremendous job in our program. This great female is going to be a donor cow someday.



## Genoa Livestock, LLC

Top Performance Hereford Genetics

Bob and Carol Coker • 604 Genoa Ln., Minden, NV 89423 • 775-782-3336



## PICK OF THE HEIFERS

**Lot 16A** —  
**CG 4037 Heartland Breeze 135Y**

**Lot 16B** —  
**CG 9137W Klondike Kate 137Y**



## Reno Lot 16A

**CG 4037 HEARTLAND BREEZE 135Y**

P43189642 — Calved: March 18, 2011 — Tattoo: LE 135Y/RE CG  
 CS BOOMER 29F (SOD,CHB)(DLF,HYF,IEF) REMITALL BOOMER 46B (SOD,CHB)(DLF,HYF,IEF)  
 THM DURANGO 4037 (CHB)(DLF,HYF,IEF) CS MISS 1ST FLAG 21A (DOD)(DLF,IEF)  
 P42460503 THM 7085 VICTRA 9036 (DLF,HYF,IEF) THM VICTOR DOM 7085  
 THM VICTRA 5404 7073  
 H 8E EMBRACER 8006 (CHB) REMITALL EMBRACER 8E (SOD,CHB)(HYF)  
 CG 8006 SQUEEZE 107W H MISS APPROVAL 9082  
 P42988169 SCHU-LAR 5K OF 1F 51M (DLF,IEF) BJH 25K PROSPCTR 51M (SOD)  
 SCHU-LAR 1F OF 26C 517 (DOD)

CE	BW	WW	YW	MM	M&G	MCE	SC	FAT	REA	MARB	BMS	CEZS	BIIS	CHBS
4.1	0.6	45	73	17	40	4.5	0.8	-0.030	0.40	0.16	23	20	19	27
P	P+	P+	P+	P+		P	P+	P	P					

• Choose between these two females from one of the more productive AI sire-producing cow families in recent history. Canyon Gem Livestock will have full representation of this offering in the barns for your evaluation. 135Y is a fancy Durango 4037 daughter out of an Embracer 8006, cow-calf entries in this year's show. 137Y is the very first calf sired by Churchill Frontier 9137W, 2009 Reno Reserve Grand Champion Horned Bull and the 2010 Denver Reserve Grand

## Reno Lot 16B

**CG 9137W KLONDIKE KATE 137Y**

P43183467 — Calved: March 22, 2011 — Tattoo: LE 137Y/RE CG  
 CRR ABOUT TIME 743 (CHB)(DLF,HYF,IEF) THM DURANGO 4037 (CHB)(DLF,HYF,IEF)  
 CHURCHILL FRONTIER 9137W ET (DLF,HYF,IEF) CRR D03 CASSIE 206  
 42992949 CHURCHILL LADY 401 ET (DOD) H5 9012Y ADVANCE 501 (SOD,CHB)  
 CHURCHILL LADY 792 (DOD)  
 BJH 030 PROSPCTR 25K  
 SCHU-LAR 5K OF 1F 51M (DLF,IEF) BJH MI ROSE 85H (DOD)  
 P42072568 SCHU-LAR 1F OF 26C 517 (DOD) FELTONS 517 (SOD,CHB)(HYF)  
 SL HEARTLAND 2Z X4 26C (DOD)

CE	BW	WW	YW	MM	M&G	MCE	SC	FAT	REA	MARB	BMS	CEZS	BIIS	CHBS
4.4	1.0	39	61	15	34	4.6	1.2	-0.010	0.25	0.21	27	22	25	23
.07	.32	P+	P+	P+		.06	P+	.11	.11	.10				

Champion Horned Bull. She is a maternal sister to 135Y's dam. Their mother is the maternal granddam to Huth Progression S019 at ABS Global. These heifers excel in low birth wt., calving ease - direct and maternal - and marbling. They both index in the top 5% for BMS and CEZ\$. These females are bred to develop into maternal greats that will transmit the powerful genetic tradition of this cow family to future generations.



Tim and Lisa Dolcini • 106 W. 500 S., Jerome, ID 83338  
 208-324-3821 • 208-308-4083 Cell • qualityis@canyongemlivestock.com



Lot 17 —  
TPR Ms Rocket Z151

## Reno Lot 17

### TPR MS ROCKET Z151

43170446 — Calved: March 24, 2011 — Tattoo: BE Z151  
 CJH HARLAND 408 (CHB)(DLF,HYF,IEF) HH ADVANCE 9005J (CHB)(DLF,IEF)  
 CHURCHILL ROCKET 938W (DLF,HYF,IEF) CJH L1 DOMINETTE 0064 (DLF,HYF,IEF)  
 42982826 CHURCHILL LADY 6109S ET (DLF,IEF) GH NEON 17N (CHB)  
 CHURCHILL LADY 202

/S 745 MR MOM 0086 (SOD,CHB)  
 TPR 0086 MS MOM N312  
 4236331 TPR 645 MISS L109

/S MISTER MOM 7745 (SOD)(DLF,IEF)  
 /S LADY LEMHI 6124F  
 WH PATRIOT 645 (SOD)  
 TPR MISS 9001

CE	BW	WW	YW	MM	M&G	MCE	SC	FAT	REA	MARB	BMIS	CEZS	BIIS	CHBS
3.6	1.0	46	76	28	50	3.3	0.9	0.015	0.31	0.30	.21	18	17	27
.05	.36	.20	.20	.11		.05	.10	.11	.11	10				

- This heifer has it all, outstanding EPDs and phenotype backed by superior maternal and carcass genetics. He is sired by Churchill Rocket 938W, who is our pick as a bull with superior EPDs. He is a son of the great CJH Harland 408 out of a full sister to Churchill Yankee. Her dam is a maternal powerhouse. She has four direct daughters in production in our herd and five granddaughters. All of her offspring are in the top of her herds. This is our first consignment to the Reno sale, so we are bringing our best.

## POPLARS RANCH INC.

Alan Parks • 59234 Ft. Rock Rd., Silver Lake, OR 97638  
 541-576-2651 • dan@poplarsranch.com



Lot 19 —  
HDCC Miss Mark Domino 110

## Reno Lot 19

### HDCC MISS MARK DOMINO 110

43175365 — Calved: Feb. 4, 2011 — Tattoo: BE 110  
 UPS DOMINO 3027 (CHB)(DLF,HYF,IEF) CL 1 DOMINO 9126J 1ET (SOD,CHB)(DLF,IEF)  
 UPS DOMINO 5008 UPS MISS DIAMOND 1353  
 42597835 UPS MISS KNIGHT 3777 BCD 721G KNIGHT 4K (SOD,CHB)  
 UPS MISS ADVANCE 9307

BHR MARK DONALD 313  
 BHR 313 DOMINETTE 717  
 42913190 BHR MARKETTE 316

ORE NICKOLAS 130  
 BHR ROYAL LASS 682  
 ORE NICKOLAS 130  
 BHR 325 DOMINETTE 401

CE	BW	WW	YW	MM	M&G	MCE	SC	FAT	REA	MARB	BMIS	CEZS	BIIS	CHBS
4.3	0.4	40	72	23	43	2.3	0.8	0.006	0.36	0.12	19	19	16	22
.04	.33	P+	P+	P		.03	P+	.08	.08	.07				

- The UPS Domino 5008 daughters have been very well received the last few years in Reno and this one is better than we have brought before. She was recently named reserve champion female at the Central Washington Fair in Yakima. She is maternal through and through and has a dam with a BR of three at 92.3, WR of two at 101 and YR of one at 100. The Anderson family always brings their best to the sale and this one is sharp fronted with a tremendous profile and style. She is very attractive in her design, very complete and will compete with the best.

## HIGH DESERT CATTLE CO.

M.T. and Corina Anderson • 47295 Izee Paulina Ln., Canyon City, OR 97820  
 541-493-2067 • cori@ortelco.net



Lot 18 —  
MHW Belle Starr 152

## Reno Lot 18

### MHW BELLE STARR 152

43191658 — Calved: April 3, 2011 — Tattoo: BE 152  
 MH MONUMENT 3147 (CHB)(DLF,HYF,IEF) MH DAKOTA 0230 (SOD,CHB)(DLF,HYF,IEF)  
 MHW MONUMENT 716 MH MISS PATRIOT 971  
 42795400 MHW 791 DAWN 0031 MH 065 DOMINO 791  
 MH MISS RUSTY 5175

MH 065 DOMINO 791  
 MH WESTERN LADY 267  
 42355519 MHW MISS DOMNET 9976

WT 90 DOMINO 065 (SOD)  
 MS MASTERPIECE 5235  
 RB L1 DOMINO 7053 (SOD)  
 MISS 642 DOMNET 3128

CE	BW	WW	YW	MM	M&G	MCE	SC	FAT	REA	MARB	BMIS	CEZS	BIIS	CHBS
-2.3	6.4	57	94	21	49	-3.0	0.8	0.027	0.28	0.05	14	10	12	24
P	P+	P	P	P		P	P	P	P	P				

- This young April heifer is our best spring heifer calf. She is square, stout and deep. She is sound and correct, has more than enough thickness and should make a great cow.

## Mrnak Herefords West

P.O. Box 70, Whitmore, CA 96096  
 775-266-3613 • 775-848-0160 Loren  
 lorenmrnak@aol.com

## PICK OF THE HEIFER CALF CROP

Daughters of these bulls are available in Lot 7.



Churchill Yankee



CJH Harland 408

## Reno Lot 20

### PICK OF THE HEIFER CALF CROP

- This unique lot should be looked at hard on sale day. Instead of Dave and Lynda picking out the heifer to bring this year, they are going to let you do it. Then no mistakes are made? They have consistently brought brood cow after brood cow prospects here for years. All those that have gone across the stage for Bird Herefords have gone on to make great brood cows. Selling the pick of all of our heifer calves born Nov. 17, 2010 to Jan. 21, 2011. Sires include C Rambo 8022, CJH Harland 408, Churchill Yankee and CJH L1 Domino 552. Make your choice by Jan. 1, 2012.



Dave and Lynda Bird • 45863 Crow Rd., Halfway, OR 97835  
 541-742-5436 • 541-490-3279 Cell • bird@pinetel.com

# SUCCESS STORIES



## WH SARA LEE 004X

*The high selling beifer of the 2010 sale to GKB Cattle Co. in Texas. 2011 Southwest Regional Junior Preview Show Champion Female and class winner at the 2011 NJHE*



## 5B HARLAND XX'S AND OO'S X6

*Purchased by Mazie and Makenzie Macfarlane at the 2010 sale, she was many-times a class winner and California State Fair Junior Show Reserve Junior Champion Female.*



## CG HELENA 91U

*This female was bought as a bred beifer in the 2009 sale by Split Butte Ranch and now is in their donor pen!*

# Nugget Show and Sale Benefit Auction

## 15th ANNUAL FROZEN GENETICS AUCTION • December 2, 2011

*This will be an excellent opportunity to purchase the most cutting edge Hereford genetics available today. We will be featuring semen and certificates on several national champions and other powerful performance bulls both horned and polled. Most semen packages will include three straws and one certificate. Shipping costs will be paid by the buyer. A listing of the bulls is included. More may be available at sale time. Contact Dave Bird at 541-742-5436 or cell 541-490-3279 for more information.*

### BULLS

1. **BB Mark Donald 3007**
2. **Choice: Boyd Worldwide 9050 ET  
MSU TCF Revolution 4R  
TH 122 711 Victor 719T**
3. **C Chandler 0100**
4. **Churchill Neon 626S**
5. **Churchill Sensation 028X**
6. **C New Era ET or  
CL 1 Domino 860U**
7. **ECRL18 Extra Deep 9279 "Bob"**
8. **GB L1 Domino 175E**
9. **GKB EJE B627 Full Tank B927**
10. **Golden Oak Outcross 18U**
11. **H WCC/WB 668 Wyarno 9500 ET  
and/or H Easy Deal 609 ET**
12. **H5 Solution 064**
13. **KF Got Class 809U**
14. **KK New Invention 908**
15. **MH Silverado 891 ET  
and/or UPS Domino 9525**
16. **Choice: TH RL 719T Sales Force R1W  
SB BVM 018 19R Ovation 15U ET  
or C Maui Jim ET**
17. **TH 71U 719T Mr Hereford 11X**
18. **TH 75J 243R Bailout 144U ET**
19. **TH SHR 605 57G Bismarck 243R ET**
20. **THM Durango 4037 and/or  
NJW 73S M326 Trust 100W ET**
21. **UPS Domino 3027  
CJH Harland 408  
THR Thor 4029  
Churchill Yankee ET**
22. **UPS Domino 5216**
23. **UPS Navarro**
24. **UPS TCC Nitro 1ET**
25. **Flush of one cow and the choice of  
freezing or implanting the  
harvested embryos.**
26. **Bull collection — Frontier Genetics**
27. **Custom Made Bed**

### OWNERS

- Reyes-Jarman Mark Donald Herefords and Jay Bennett
- Genex, Boyd Beef Cattle and Grassy Run Resources  
Genex, Boyd Beef Cattle, MSU and Rausch Herefords  
Genex, Topp Herefords and Gary Rome
- Chandler Herefords and Colyer Herefords
- BB Cattle Co. and Churchill Cattle Co.
- Churchill Cattle Co., Stuber Ranch, Upstream Ranch and Van Newkirk Herefords
- Colyer Herefords  
Colyer Herefords, King Herefords, Cooper Herefords, Jamison Herefords,  
GKB Cattle, Genoa Livestock, LLC and Fawcett's Elm Creek Ranch
- Fawcett's Elm Creek Ranch (Five straws; non-certificate)
- Pedretti Herefords, Coleman Herefords, Imig Herefords, Linda Lonas and  
Accelerated Genetics
- GKB Cattle
- Hoffman Ranch, Churchill Cattle Co. and Ward Ranch
- 1/5 Hoffman Ranch and OJJ Ranch  
Joe Brazil, Hoffman Herefords, Lee and Dianne Hutchens Family Trust and  
Hidden Oaks Ranch
- Harrell Hereford Ranch, C&M Herefords and S- W Herefords
- High Desert Cattle Co. and Joe Barry
- Kallie Goss
- Mrnak Herefords and Schohr Herefords  
Schohr Herefords
- Stallings Polled Herefords, Harfst Herefords, Mr. & Mrs. T. Ostermeier  
Stallings Polled Herefords, George and Karen Sprague, and Split Butte Livestock  
Stallings Polled Herefords, Colyer Herefords, George and Karen Sprague,  
Frisbie Herefords
- Genex, Topp Herefords, Wooden Shoe Farms, Boyd Beef Cattle, MCS Cattle Co.,  
Sparks Ranch, Jarold and Ryan Callahan, Sandra Martsching and Hoffman Ranch
- 1/5 Hoffman Ranch, Perks Ranch, Langford Herefords, Elmlodge Polled Herefords
- Storey Hereford Ranch
- Ned and Jan Ward, Mead Cattle Enterprises and Thomas Farm  
Ned and Jan Ward and River Valley Polled Herefords
- ABS will donate five straws/no certificate on any bull owned by ABS that includes the  
four bulls listed at the left.
- Phil Harvey, Dudley Bros., Olsen Ranches Inc. and Upstream Ranch
- Stuber Ranch and Upstream Ranch
- Upstream Ranch, Adams Hirsche Herefords, South Mountain Ranch,  
Colyer Herefords
- Donated by Dr. Galen Lusk, Western Genetics
- Quilted wall hanging by JBB/AL
- Greg Stallings Jr.